



SAT[®]

SAT[®] Understanding Scores



The **SAT** with Essay

What the SAT Measures

The SAT reinforces what students are learning in their classrooms while measuring the skills and knowledge that research shows are the most important for success in college and career. It includes the following sections.

EVIDENCE-BASED READING AND WRITING

This section is made up of a Reading Test and a Writing and Language Test, each composed of multiparagraph passages and multiple-choice questions.

The Reading Test measures comprehension and reasoning skills and focuses on close reading of passages in a wide array of subject areas. The Writing and Language Test measures a range of skills, including command of evidence, expression of ideas, and the use of standard English conventions in grammar and punctuation.

MATH

This section includes multiple-choice and student-produced response questions, and it is divided into two portions: one that allows calculator use and one that does not. It assesses skills in algebra, problem solving and data analysis, manipulation of complex equations, geometry, and trigonometry.

ESSAY

The Essay asks students to read a high-quality source text and write an effective analysis of that text using evidence drawn from the source. It measures a range of skills in reading, analysis, and writing.

How the SAT Is Scored

Students receive a total score that is the sum of their scores on the two sections (Evidence-Based Reading and Writing and Math). The SAT Essay is scored separately.

To calculate section scores, we first compute the student's raw score—the number of questions correctly answered—for each section. Nothing is deducted for incorrect answers or for unanswered questions.

Next, we convert each of the raw section scores to a scaled score of 200–800. This conversion process adjusts for slight differences in difficulty among versions of the test and provides a score that is consistent across different versions. The scaled scores are the scores provided on score reports.

SAT Scores

Total Scores

The total score is the sum of the two section scores; its range is 400–1600.

Section Scores

Students receive scores in the range of 200–800 for each of two sections. The Evidence-Based Reading and Writing section score combines the scores for the Reading Test and the Writing and Language Test. The Math section score is derived from the Math Test score, including the calculator and no-calculator portions.

Test Scores

The range for the following test scores is 10–40:

- Reading
- Writing and Language
- Math

Cross-Test Scores

The range for cross-test scores is also 10–40. These scores represent performance on select questions across the three tests and show a student's strengths in the following domains:

- Analysis in History/Social Studies
- Analysis in Science

Subscores

Subscores in the range of 1–15 offer feedback on student performance in the following skill areas:

- Command of Evidence
- Words in Context
- Expression of Ideas
- Standard English Conventions
- Heart of Algebra
- Problem Solving and Data Analysis
- Passport to Advanced Math

SAT Essay Scores

The following three scores for the SAT Essay are on a 2–8 scale:

- Reading
- Analysis
- Writing

These scores aren't added together or combined with any other test scores. The online score report shows the prompt the student responded to and the student's essay.

Score Ranges

A student's ability is better represented by score ranges than points. Score ranges are derived from the standard error of measurement and show how much your scores would likely vary if you took a different administration of the test under identical conditions.

Score ranges:

- Total: ± 40 points
- Section: ± 30 points
- Test scores, subscores, and cross-test scores: ± 2 points

Percentiles

A student's percentile rank represents the percentage of students whose score is equal to or lower than their score. For example, if a student's score is in the 75th percentile, 75% of a comparison group achieved scores at or below that student's score. Two types of percentile ranks, comparing student scores to two different reference populations, are provided in this publication for both total and section scores.

Nationally Representative Sample Percentiles are derived from a research study of U.S. students in grades 11 and 12 and are weighted to represent all U.S. students in those grades, regardless of whether they typically take the SAT.

SAT User Percentiles are based on the actual scores of students in the past three graduating classes who took the current SAT during high school. These user percentiles are reported on tests completed in August 2020 through June 2021.



SAT®

Cómo interpretar los resultados del SAT®



El SAT con Ensayo

¿Qué mide el SAT?

El SAT refuerza lo que aprenden los estudiantes en las aulas, además de medir las habilidades y el conocimiento que, según las investigaciones, resultan más importantes para alcanzar el éxito tanto en la universidad como en la carrera.

Incluye las siguientes secciones:

LECTURA Y ESCRITURA BASADAS EN EVIDENCIAS

Esta sección consta de dos pruebas, una de Lectura y otra de Escritura y Lenguaje, cada una de ellas compuesta de fragmentos de varios párrafos y preguntas de opción múltiple.

La prueba de Lectura mide las destrezas de comprensión y razonamiento y se enfoca en la lectura atenta de fragmentos de una gran variedad de temas. La prueba de Escritura y Lenguaje mide un rango de destrezas que incluyen el dominio de evidencias, expresión de ideas y la aplicación de las normas estándar de gramática y puntuación del inglés.

MATEMÁTICAS

Esta sección incluye preguntas con respuestas generadas por el estudiante y de opción múltiple, y se divide en dos partes: una que permite el uso de la calculadora y otra que no. Evalúa las destrezas en álgebra, resolución de problemas y análisis de datos, manipulación de ecuaciones complejas, geometría y trigonometría.

ENSAYO

El Ensayo es una prueba que pide a los estudiantes que lean un texto de una fuente de alta calidad y escriban un análisis eficaz de dicho texto usando evidencia tomada de la fuente. Mide un rango de destrezas en lectura, análisis y escritura.

¿Cómo se califica el SAT?

Los estudiantes reciben un puntaje total que es la suma de sus puntajes en las dos secciones (Lectura y Escritura basadas en evidencias y Matemáticas). El Ensayo del SAT se califica por separado.

Para calcular los puntajes de cada sección, primero calculamos el puntaje directo del estudiante (la cantidad de preguntas que respondió correctamente) en cada sección. No se resta nada por las respuestas equivocadas o por las preguntas sin contestar.

Después convertimos los puntajes directos de cada sección a un puntaje estandarizado que va de los 200 a los 800 puntos. Este proceso de conversión ajusta las pequeñas diferencias que pueda haber en la dificultad entre las diferentes versiones del examen y da un puntaje que es consistente con todas las diferentes versiones. Los puntajes estandarizados son los que aparecen en el informe de resultados.

Resultados del SAT

Puntajes totales

El puntaje total es la suma de los puntajes de las dos secciones; su rango está entre 400 y 1600.

Puntajes por sección

Los estudiantes reciben puntajes en el rango de 200 a 800 para cada una de las dos secciones. El resultado de la sección de Lectura y Escritura basadas en evidencias combina los puntajes de la prueba de Lectura y de la prueba de Escritura y Lenguaje. El resultado de la sección de Matemáticas se obtiene del puntaje de la prueba de Matemáticas, que incluye las partes con y sin calculadora.

Puntajes del examen

El rango de los siguientes puntajes de las pruebas es de 10 a 40:

- Lectura
- Escritura y Lenguaje
- Matemáticas

Puntajes de pruebas que contienen otras materias

El rango para los puntajes de las pruebas que contienen otras materias también es de 10 a 40. Estos puntajes representan el desempeño logrado en preguntas seleccionadas entre las tres pruebas y muestran las fortalezas del estudiante en los siguientes dominios:

- Análisis en Historia y Estudios Sociales
- Análisis en Ciencias

Subpuntajes

Los subpuntajes en el rango de 1 a 15 ofrecen retroalimentación sobre el desempeño del estudiante en las siguientes áreas de destreza:

- Dominio de la evidencia
- Palabras en contexto
- Expresión de ideas
- Normas estándar del inglés
- Fundamentos del álgebra
- Resolución de problemas y análisis de datos
- Pase a Matemáticas avanzadas

Puntajes del Ensayo del SAT

Los siguientes tres puntajes para el Ensayo del SAT están en una escala del 2 al 8:

- Lectura
- Análisis
- Escritura

Estos puntajes no se suman ni se combinan con ningún otro puntaje del examen. El informe de resultados en línea muestra el tema que respondió el estudiante y su ensayo.



Understanding Your Score Report

SAT

Visit sat.org/scores for more help interpreting and sending your scores.

TOTAL SAT SCORE

Total SAT® scores range from 400 to 1600. Your total score is the sum of your section scores.

SECTION SCORES

The section scores for Evidence-Based Reading and Writing and for Math each range from 200 to 800. To arrive at each section score, we converted your raw score, which is the number of questions you answered correctly. There's no penalty for guessing.

We convert raw scores to adjust for slight differences in difficulty between versions of the test, making sure there's no advantage in taking the test on any particular day.

PERCENTILES

Percentiles give you perspective on your performance. They show the percentage of students whose scores are equal to or below your score. One kind of percentile, Nationally Representative Sample Percentile, compares your score to the scores of a representative group of 11th- and 12th-grade U.S. students. The other, SAT User Percentile, compares your score to those of typical SAT test takers.

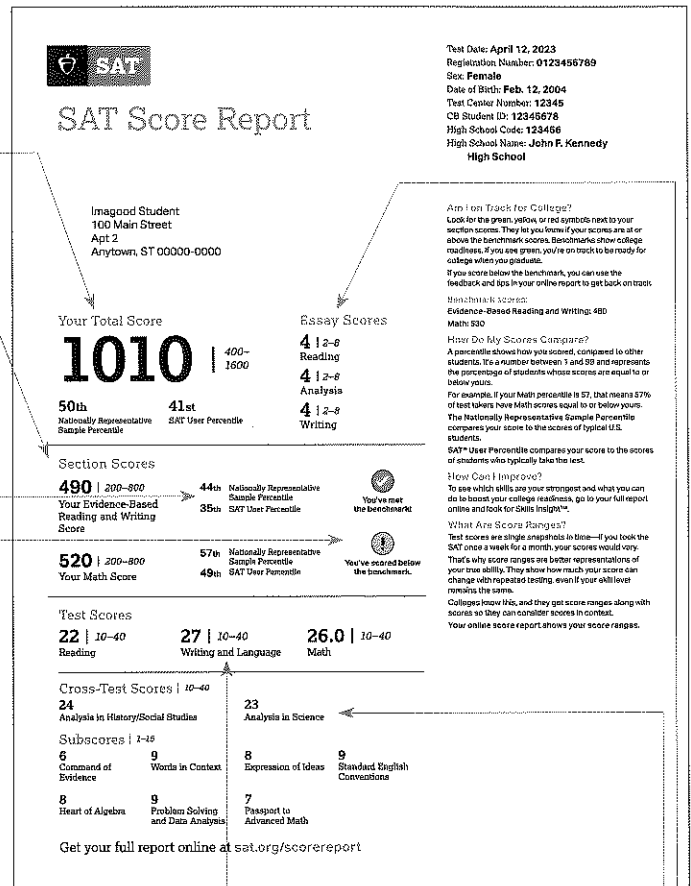
BENCHMARKS

The benchmark icon is another way to gain perspective. A checkmark shows you scored at or above the benchmark (480 for Evidence-Based Reading and Writing and 530 for Math). This means you're on track to be ready for college when you graduate.

An exclamation point shows you scored below the benchmark. Use the feedback and tips in your online report at sat.org/scorereport to get back on track.

ESSAY SCORES

The Essay asks students to read a high-quality source text and write an effective analysis of that text using evidence drawn from the source. It measures a range of skills in reading, analysis, and writing.



Score Report

TEST SCORES

Test scores for Reading, Writing and Language, and Math range from 10 to 40. The Math Test score is reported to the nearest half point.

CROSS-TEST SCORES AND SUBSCORES

Cross-test scores have a range of 10–40, and subscores have a range of 1–15. They highlight your strengths and suggest areas for improvement.



Helping Millions of Students Plan for Life After High School

Inspired by Students, Powered by College and Career Experts

BigFuture® is a free, comprehensive set of digital resources that helps all students take a productive first step after high school. With feedback from students, insights from professionals, and over 100 years of College Board expertise, the BigFuture personalized dashboard simplifies a complex process into key actions across three categories:

Plan for College



COLLEGE SEARCH

Students can search and filter **over 3,000 college profiles** with rich content about campus life and admissions provided by the colleges themselves.



STUDENT SEARCH SERVICE™

On average, students contacted by colleges through this service receive **29% more college admission offers**.

Pay for College



SCHOLARSHIP SEARCH

Students explore and match with over **\$4 billion** in scholarships each year.



BIGFUTURE SCHOLARSHIPS

Juniors and seniors who complete steps on their dashboard earn entries for monthly scholarship drawings that award **nearly \$3 million each year**.



FINANCIAL AID RESOURCES

We offer guides and an Expected Family Contribution Calculator to help families understand college costs, student loans, the FAFSA®, and more.

Explore Careers



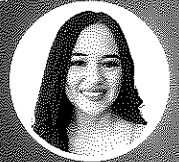
CAREER SEARCH

Students connect their interests and skills to **over 1,000 career profiles** across a variety of education levels. They can view job requirements, projected salaries, and growth potential.

“As a low-income, first-generation college student, BigFuture ensured that I had the information I needed to be successful throughout the entire process. Without it, I may not have found, or gotten into, my top choice school.”

Shylyne

Class of 2022
Mansfield R-IV
High School, MO



“[BigFuture] has really inspired me to look into new scholarships and showed me that it is possible to get a lot of financial aid if you look in the right places. I have started to plan ahead for my future and this was an encouraging experience!”

Neysi

Class of 2022
Battle Mountain
High School, CO



“I think that this is an amazing program that helps to provide opportunities for kids like me who are low-income and worrying about how they’ll be able to pay for furthering their education. [BigFuture] is very helpful and also easy to navigate, which makes the process of going to college less stressful.”

Cori

Class of 2022
Lamar High
School, TX



Explore the dashboard, resources, and more at **bigfuture.org**.